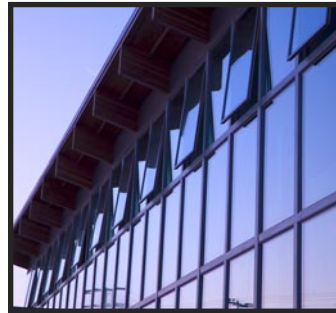
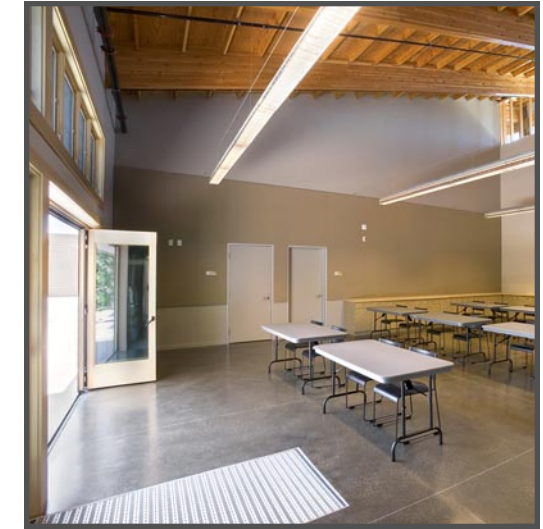
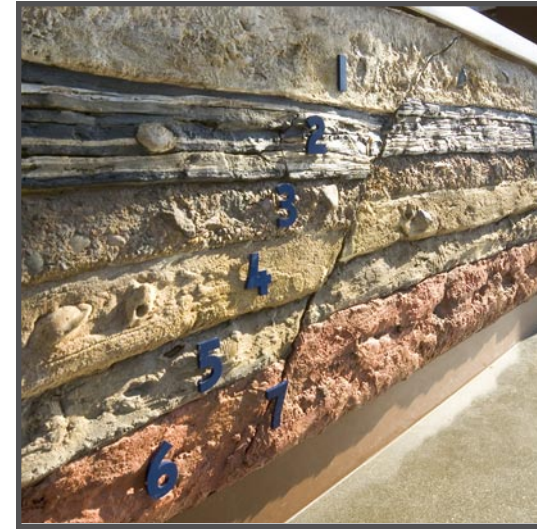


An Educational Tool in Itself

The ENC has been teaching and growing within our community for over 35 years. Having a building of our own has been a dream since our inception and we can finally say that our dream has come true. Our 8,500 square-foot sustainable learning center provides vital classroom and educational spaces and serves as an educational tool itself. We hope that our building can show the benefits of environmentally-conscious design and teach our visitors how to implement sustainable features in their homes and businesses. Most importantly, we hope the center will inspire our visitors to make personal investments in the protection of the environment.



Energy & Atmosphere

With a 42 kilowatt photovoltaic array (solar panels), the ENC produces more energy than it utilizes. A computer monitor in the hallway shows how much clean energy we are producing and the amount of carbon emissions kept from entering the atmosphere. To conserve energy, the building is equipped with lighting sensors that monitor room occupancy and available daylight. The use of natural ventilation has eliminated the need for air conditioning.

Indoor Environmental Quality

The building is placed on an east-west axis to harvest natural daylight as well as cool ocean breezes. The use of low-emitting materials ensure the release of less harmful indoor air contaminants. The monitoring of CO₂ levels makes for a healthier indoor space.



Sustainable Sites

The use of a white-colored roof and light-colored concrete decrease the impact of heat island effect. The heat island effect occurs when natural landscapes are covered with pavement and structures. Bike racks, special parking spots for low emission vehicles and on-site showers encourage greener transportation. A stormwater management system controls runoff and removes pollutants.

Water Efficiency

The use of native, drought-tolerant landscaping has eliminated the need for an irrigation system. The building has waterless urinals, dual-flush toilets and low-flow fixtures saving an estimated 15,000 gallons of potable water a year. The buildings water-efficient features reduce our water use by 46% as compared to similar buildings.



Materials & Resources

Throughout the facility, recycled and recyclable materials have been used extensively. The building insulation is composed of 85% recycled denim blue jeans and 15% cotton fibers that are rapidly renewable resources. The outside of the building is made of wood and plastic scraps that would normally end up in a landfill. Our cabinets are made of numerous recycled materials including "wheatboard" which is composed of recycled wheat chaff. Over 82% of the construction waste was recycled and diverted from landfills. The ENC also composts and recycles on-site, and uses green cleaning products.

LEED
PLATINUM






Built to Inspire

LEED, or Leadership in Energy and Environmental Design, certification is a third-party rating system led by the U.S. Green Building Council.

The ENC is the first building in Orange County to receive LEED Platinum certification, the highest level of certification. LEED-certified buildings have smaller development footprints, are healthier environments for occupants, and serve as stewards in environmental and social responsibility.

The LEED rating system is based on six categories: sustainable sites, water efficiency, energy & atmosphere, materials and resources, indoor environmental quality, and innovation in design.

The ENC earned 55 out of a total 69 LEED points.

 Printed on recycled paper using soy-based inks.



Our Learning Center is already inspiring thousands of children and adults thanks to the generosity of our donors and the creativity of our design team:

Griffin Structures, Inc. (program management); LPA, Inc. (architect); Gentosi (general contractor); Constructive Technologies Group, Inc. (LEED consultants).



LPA

GENTOSI
BUILDERS INC.



Providing Quality Education Through Hands-on Experience with Nature

Environmental Nature Center
1601 Sixteenth Street, Newport Beach, California 92663
(949) 645-8489 www.encycenter.org



Educational... by Design

